

Amplify
High-Impact Tutoring
Scheduling Webinar

August 9, 2021





Welcome and Agenda

Facilitator

Jessica Chung (she/her)

- Aircraft Design, Tutor, a Aircraft
- Based, Seattle, WA

© 2015 (e ab, ee, t, wa) / MCID 64 BDC BT0 T 11 0 15 () 9 (e e) 9 (a e)

- Designated, ed, ed, for, a de, e, f, c, , d, , a d 21 CCLG d, e, ca, a d ab, ad

Housekeeping

- AT 17c5 499, -US D. 58 BDC e, , 009 e Q&A 27 () b, e (e -US) / MCID 64 BDC BT0 T 11 0 7.5 619.3



High Impact Tutoring & Scheduling

High-impact tutoring leads to substantial learning gains by supplementing students' classroom experience.

High Impact Tutoring	Supplemental Instruction under HB 4545
Effectiveness data PK-12	Effectiveness data 3-8, EOC
Can be embedded into class (or not)	Requires dedicated faculty effort and space, STAAR*
Can be delivered in a variety of ways	Delivered
Effectiveness for 4th grade reading	More available, generally 3:1, etc.**
Highly effective for 10+ years, ages 3-5	Provided for a 30-minute period, a few times a week / week, 30-60 minutes a week

Similarities

- Supplemental instruction (does not supplant)
- Quality of instruction and assessment, effective evidence-based practices
- E.g., EMC (2503 Title 2) (a) (1) (i) 30.1 (-) 10 (f) 6.1 (c) (i) a 250



Scheduling

A design principle of high impact tutoring

Where and when will tutoring sessions happen?

- In class, during lecture, in class, during
- In class, before, during, after lecture, during
- Outside of class, after class, during lecture
- Outside of class, during lecture
- _____

What does the research tell us?





Scheduling Tutoring under HB 4545

Under HB 4545, students cannot be removed from:

- Tutoring made effective for data, e.g., ead, a, ce, e, c.
- Tutoring effective for data, e.g., ead, a, ce, e, c.





Scheduling High Impact Tutoring

TEA Recommendations and Guidance

- Identify critical areas of need for students - especially
- Consider state and local standards, benchmarks, and objectives, and be data driven
- Consider evidence-based practices that are effective for students
- Leverage additional resources to create additional learning opportunities
- Partner with district and state agencies, including TE2, to create a network of learning opportunities



Free Resources to Get Started

Redesigning a Master Schedule

Tools:

[Unlocking Time: Schedule Library and Bell Schedule Builder](#)

Resources:

[NSSA: High Impact Tutoring District Playbook](#)

[ERS: Three Steps to a Strategic Schedule](#)

[CCASN: Master Schedule Guide](#)

[Reimagining the School Day \(article with examples\)](#)



Promising Practices & Scheduling Examples for High Impact Tutoring

Recommended Approaches

- Face-to-face
- WIN/In-person Peer-led
- Peer-to-Peer/E-peer Peer-led
- Tutor-led/edagogy before/after class, during lecture, or as a separate, scheduled
- Recite, practice, and explain



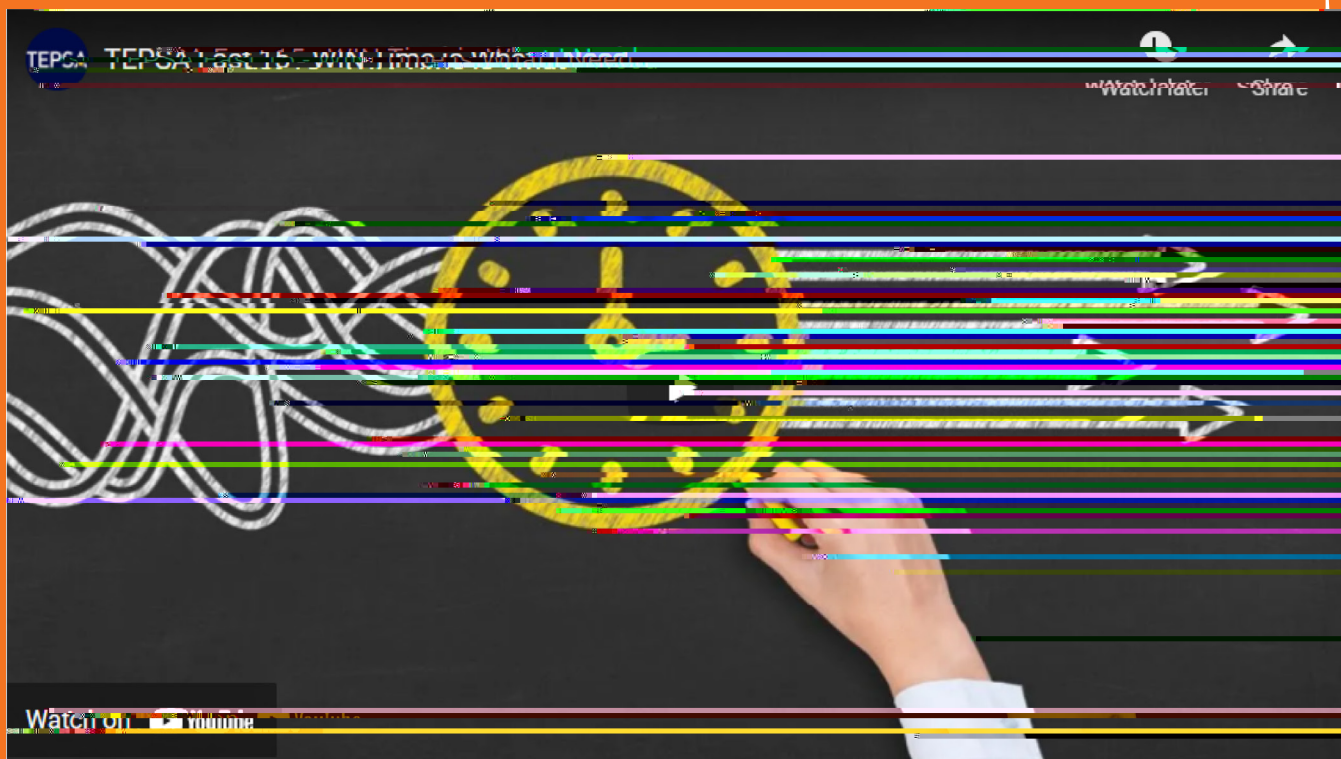
Flex Blocks

Period	Start	End	Minutes
Period 1 / 2	8:30a	10:00a	90
Period 3 / 4	10:05a	11:35a	90
Block / Tutorial A	11:35a	12:05	30
Block / Tutorial B	12:10	12:40	30
Period 5 / 6	12:45	2:15	90
Period 7 / 8	2:20	3:50	90

- Homework
- Lect
- Adv



WIN (What I Need)



Laura ...
WIN Time ...
TEPSA Presents: March 2010

TESPA Webinar - WIN Time is What I Need

A M, c, b, d E e e, a, C, e ISD, WIN, e, f, 7:50 AM, a f e, a, a, c e e, 8:20 AM, -T, .

Intervention Periods

Sample Elementary Lunch/Recess/CAMP/ Intervention Schedule

Grade	CAMP (60 minutes)	Recess (30 minutes)	Lunch (30 minutes)	Interventions (45 minutes)
Pre-K	12:00 – 1:00	10:30a – 11:00a	10:00a – 10:30a	N/A
Kindergarten	1:05 – 2:05	10:05a – 10:35a	10:35a – 11:05a	2:05 – 2:55
1 st Grade	9:35a – 10:35a	10:35a – 11:05a	11:05a – 11:35a	8:35a – 9:20a
2 nd Grade	12:05 – 1:05	11:05a – 11:35a	11:35a – 12:05	2:55 – 3:40
3 rd Grade	8:35a – 9:35a	11:35a – 12:05	12:05 – 12:35	12:40 – 1:25
4 th Grade	10:35a – 11:35a	1:05 – 1:35	12:35 – 1:05	11:35a – 12:20
5 th Grade	2:25 – 3:25	12:35 – 1:05	1:05 – 1:35	11:45a – 12:30

Sample MS Schedule Showing Interventions

See a separate page, page 8, for the Middle School Schedule. Web page: [Elementary and Middle School](#)



Parallel Blocks/Extension Periods

Sample Elementary Parallel Blocks with Tutoring

Instruction	Range of Time (90 minutes total)	Class configuration
Writing	25-45 minutes	Teacher-led
Spelling	45-65 minutes	5 minutes of direct instruction (see below)

Reading, direct instruction, and a 5-minute direct instruction block. See below for Web, a E a a d R a t c a .

Sample HS Schedule with Hybrid Traditional & A/B blocks

See a e c e d e, a e 10, f H, l a c T, , S c e d, Web, a E a a d R a t c a .



Tutoring Outside the School Day

Immediately Before or After School, Saturdays,
and Intercessions

Important Considerations:

- Take a break and don't forget to eat!
- Please do not use your cell phone, Facebook, or any other social media during this time.
- Leave your cell phone on silent, e.g., vibrate. CCLC/ACE

Recommended viewing:

[Ector County ISD's presentation on after school 1:1 virtual tutoring program](#)



Recovering Instructional Time

Tac...
be...
ba...
bea...
da.

Se...
eçte...
ba...
aç...

Wrap Up

Thank you! Any Questions?

Links:

[Scheduling Webinar Survey](#)



Email:

- TEA: TexasTutoring@tea.texas.gov
- Amplify: txconsult@amplify.com



Amplify

